



✕ He Kāinga Mokopuna Designs

The three He Kāinga Mokopuna designs have been created to provide whānau Māori with low to moderate cost, high quality culturally sensitive living options for urban and rural/papakāinga locations.

The designs can be co-located with existing serviced dwellings or, for the larger two versions, built as stand alone accommodation. The designs can be off site manufactured or built on site and come with multi proof consents so only the site connections need a Building Consent.

The designs are available free to whānau Māori on application.



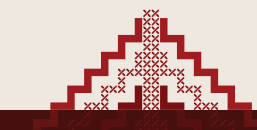


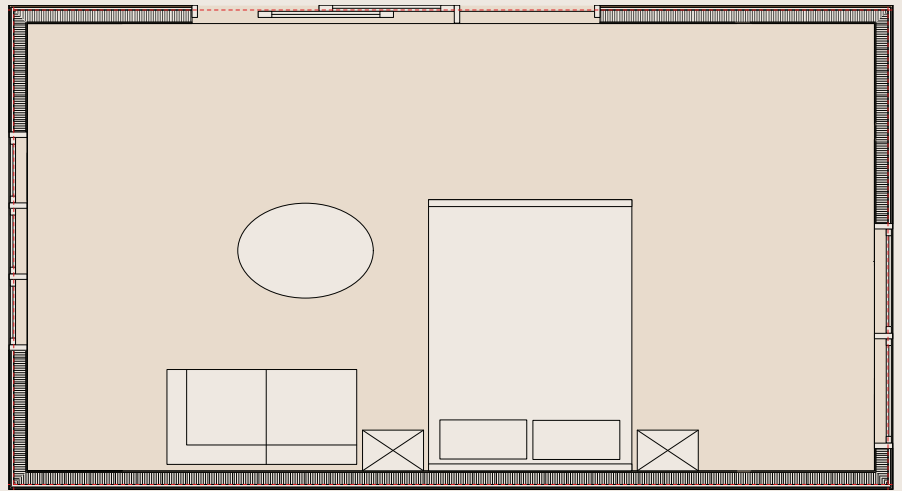
✕ Whare Tākerekere

This starter cabin is designed as a simple, low-cost, high-quality living environment for a single person or couple where there is access to a whare matua or fully serviced parent dwelling either in an urban or rural/papakāinga location.

The whare consists of a generous sleepout space with a covered mahau/porch which is large enough to dine on.

Whare Tākerekere measures 3.6m wide by 6.4m long (23m²) and is designed to be able to accommodate the later internal additions of an ensuite and or a kitchenette.





Materials include timber frame, ply floor and interior linings, color steel cladding to sides and rear (for durability, cost and low maintenance) and a timber/board and batten front wall.

Whare Tākerekere **does not** require a Building Consent being unserviced and under 30m².

Whare Tākerekere summary:

- **23m² Starter Cabin**
- **Quality materials** including timber frame, plywood linings, colorsteel and timber cladding plus double glazing
- **Short or long term accommodation** for older teenagers, single person or couple
- **Unserviced** – needs to be located near a whare matua/serviced parent dwelling
- **Covered mahau/porch** for sheltered entry and outdoor dining
- Designed to **have ensuite and/or kitchenette** added internally
- **No Building Consent required**

Scan to request for **Whare Tākerekere design.**



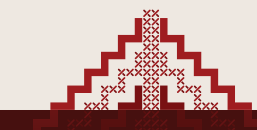


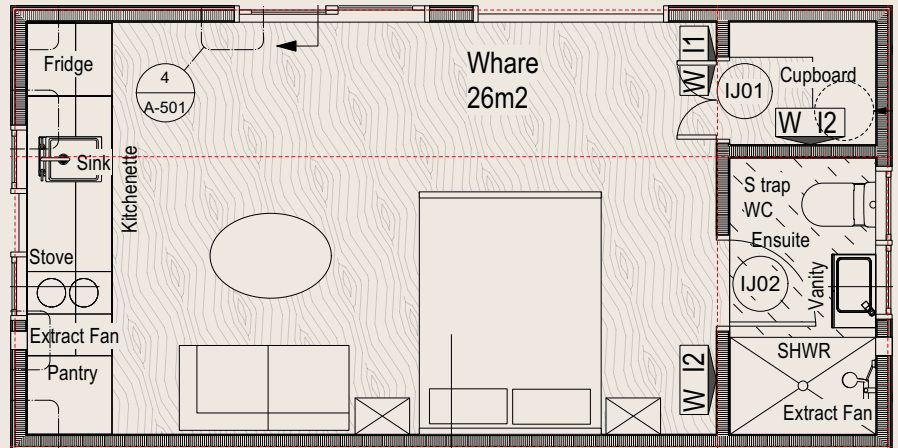
✕ Whare Tuhanga

The Whare Tuhanga is a self contained tiny home designed as a moderate cost, high quality temporary or permanent living environment for a single person, couple or sole parent.

The whare is 26m² (3.6m x 7.2m) and includes an ensuite bathroom to one side and a kitchenette to the other with compact but flexible space for a queen size bed, sitting and dining areas. The Whare Tuhanga can be located by itself, with other Whare Tuhanga or near a whare matua (parent dwelling) either in urban or rural/papakāinga locations.

The Whare Tuhanga has a gable roof and a lean to mahau/covered porch and is designed to remember traditional Māori domestic whare raupo and whare nikau while keeping kitchen and toilet functions as separate as possible.





Materials include timber frame, ply floor and interior linings, color steel cladding to sides and rear (for durability, cost and low maintenance) and a timber/board and batten front wall.

The Whare Tuhanga has a multi proof consent with MBIE for up to Very high wind zones, Climate zone 4, Earthquake Zone 3 and Exposure Zone C. This means it can be built just about anywhere in Aotearoa and only needs a Building Consent to cover site connections to services (not for the Whare itself).

Whare Tuhanga summary:

- **26m² self contained cabin**
- **Quality materials** including timber frame, plywood linings, colorsteel and timber cladding plus double glazing
- **Short or long term accommodation** for single person, kaumātua, couple or sole parent
- **Includes ensuite and kitchenette** and can be located by itself or near a whare matua/serviced parent dwelling
- **Covered mahau/porch** for sheltered entry and outdoor dining
- **Comes with a Multi proof consent** for nearly all locations in Aotearoa – Building consent only required for site connections

Scan to request for **Whare Tuhanga design.**



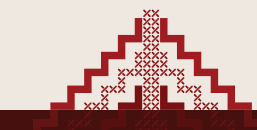


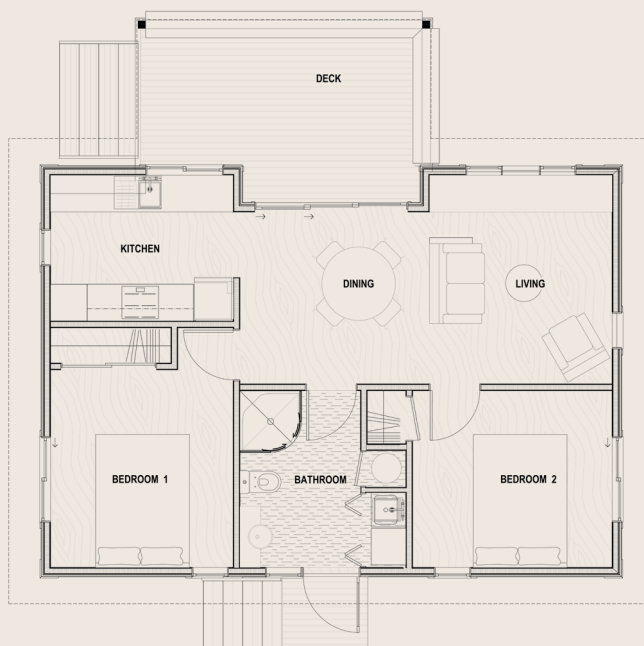
✕ Whare Mangainga

The Whare Mangainga is a self contained two bedroom compact home designed as a moderate cost, high quality permanent living environment for a small whānau, couple or kaumātua.

The whare is 60m² (6.6m x 9.0m) and includes a combined bathroom laundry, open plan kitchen, dining and living areas with a generous entry/dining mahau (covered porch). The Whare Mangainga can be located by itself, with or near a whare matua (parent dwelling) as a granny flat either in urban or rural/papakāinga locations.

The Whare Mangainga has a gable roof and a lean to mahau/covered porch and is designed to remember larger traditional Māori domestic whare raupo and whare nikau while keeping kitchen and toilet functions as separate as possible.





Materials include timber frame, ply floor and interior linings, color steel cladding to sides and rear (for durability, cost and low maintenance) and a timber/board and batten recessed feature central front wall

The Whare Mangainga has a multi proof consent with MBIE for up to Very high wind zones, Climate zone 4, Earthquake Zone 3 and Exposure Zone C. This means it can be built just about anywhere in Aotearoa and only needs a Building Consent to cover site connections to services (not for the Whare itself).

Whare Mangainga summary:

- **60m² fully self contained two bedroom house**
- **Quality materials** including timber frame, plywood linings, colorsteel and timber cladding plus double glazing
- **Long term accomodation** for small whānau of up to two tamariki, kaumātua, or couple
- **Includes two bedrooms** and can be located by itself or near a whare matua/serviced parent dwelling as a 'grannyflat'
- **Large covered mahau / porch** for sheltered entry and outdoor dining
- **Comes with a Multi proof consent** for nearly all locations in Aotearoa – Building consent only required for site connections

Scan to request for **Whare Mangainga design.**



National
SCIENCE
Challenges

BUILDING BETTER
HOMES, TOWNS
AND CITIES

He Kāinga
Whakamana Tangata
Whakamana Taiao

✕ He Kāinga Mokopuna Designs

He Kāinga Mokopuna Designs addresses the critical housing shortage in Aotearoa, New Zealand, with a focus on the unique needs of Rangatahi Māori and their families. Recognising the importance of whānau living and community support, we create affordable housing options that honor cultural values and improve financial capacities. By providing detailed cabin plans, streamlined consent processes, and budgeting guidance, we empower young Māori to build on their whānau land and support intergenerational living.

Our commitment to sustainable development and social equity ensures that our housing solutions foster stability, cultural continuity, and strengthened familial bonds for generations to come.

Find out more about He Kāinga Mokopuna Designs from **Building Better Homes, Towns and Cities website:**
buildingbetter.nz/he-kainga-mokopuna-designs/



designed by:

FORGE